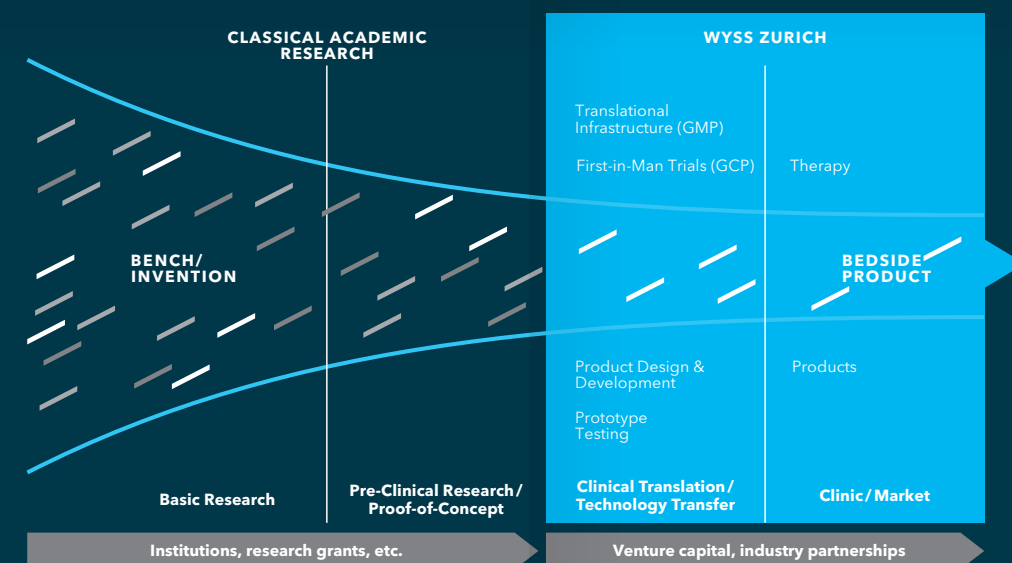


Who we are

The Wyss Zurich Translational Center (Wyss Zurich) is a unique accelerator, embedded within the ETH Zurich and the University of Zurich, that is dedicated to the emerging fields of regenerative medicine, robotics, and medical devices/bionics technologies.

We unite world-leading experts, pooling their knowledge and expertise, to form multi-disciplinary teams.



Our unique all-in-one approach

Wyss Zurich provides its projects with:

Funding to cover personnel expenses and translational research and development, notably early-phase clinical trials

Access to world-class infrastructures, including a dedicated facility to produce compounds that can be used in humans

Support in the design, analysis and business strategy of the projects by subject-matter experts

Our mission

We drive the translation of outstanding scientific discoveries into new therapies for patients and breakthrough innovations in the fields of regenerative medicine, robotics, and medical devices/bionics technologies.

Swiss entrepreneur and philanthropist Dr. h.c. mult. Hansjörg Wyss aims to support early-stage, practical applications to overcome the "valley of death."

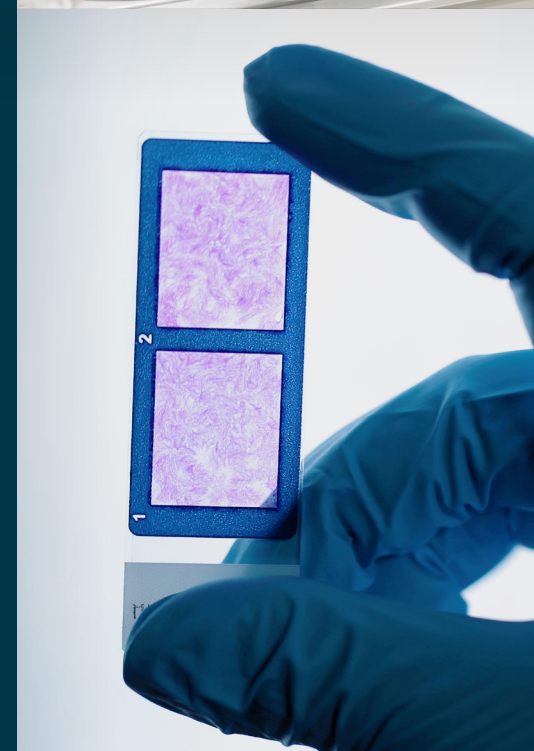
Current Wyss Zurich projects



Liver4Life

UZH/ETH | Start: 2015, Team: 11

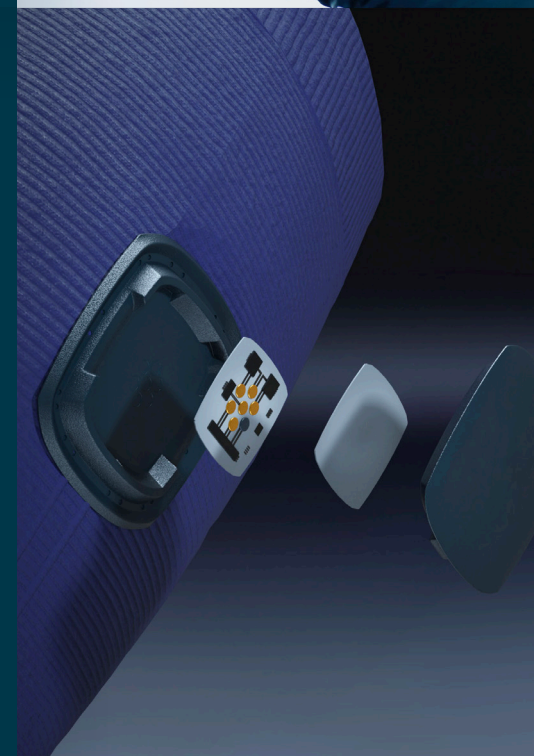
Liver4Life is developing a perfusion technology to preserve and regenerate livers outside of the body. This technology alleviates the donor liver organ shortage and will provide liver cancer patients with a novel treatment option. Liver4Life's first-in-human transplantation of a liver discarded by all Swiss transplant centers was successfully performed following 3 days of preserving and treating the liver on its device. The team continues to optimize the device and is participating in the Breakthrough Device Program offered by the FDA.



MUVON

Spin-off company: MUVON Therapeutics AG
UZH | Start: 2021, Team: 15

MUVON is establishing a novel personalized treatment modality based on autologous skeletal muscle cells that allow for the regeneration of damaged and degraded muscle tissue. The lead indication of this platform technology is stress urinary incontinence. A Phase I clinical trial to assess the tolerability and safety of the treatment has already been completed. Phase II is in progress. The team is further improving the GMP production process to pave the way for a large multicentric Phase III clinical trial to prove the efficacy of the treatment, which aims to help patients regain control over their lives.



MYNERVA

ETH | Start: 2023, Team: 5

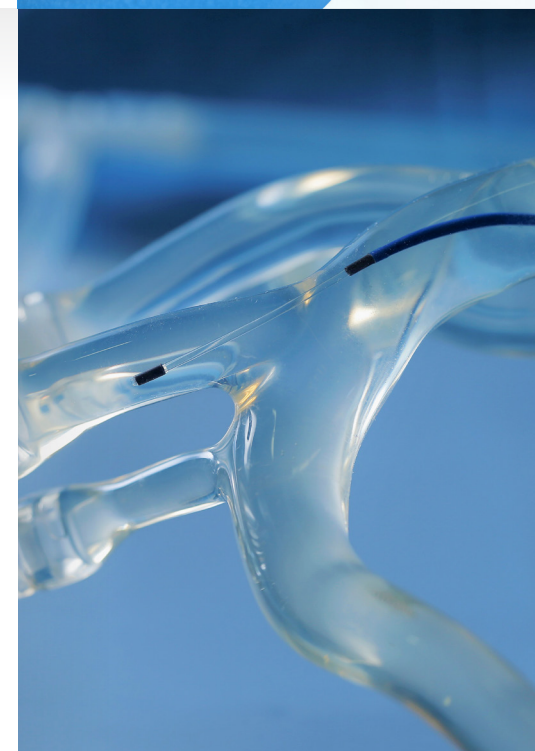
MYNERVA is creating an innovative medical device for patients with diabetic neuropathy. The system has force sensors in a special sock that capture information from the foot-ground interaction and convert it into electrical impulses delivered to a healthy portion of the nerves on the ankle. By aligning with the patient's gait, the electrodes restore the sense of touch and reduce chronic pain in real time. The team is optimizing the system while fulfilling the necessary regulatory requirements for clinical validation and market entry.



Somagenetix

Spin-off company: Somagenetix AG
UZH | Start: 2019, Team: 9

Somagenetix is developing new cell and gene therapy solutions for patients with severe genetic disorders of the immune system. A particular focus is on curing devastating inherited diseases in children, such as chronic granulomatous disease, an immune disorder that can lead to life-threatening infections. The Somagenetix team is currently establishing GMP compliance to prepare a first-in-human clinical trial and aims to extend the platform technology to other genetic diseases of the immune system.



Nanoflex

Spin-off company: Nanoflex Robotics AG
ETH | Start: 2021, Team: 28

Nanoflex aims to develop and launch magnetically controlled neurovascular catheters and corresponding navigation units to facilitate the removal of blood clots for the treatment of ischemic stroke. The team is designing a soft robotic system to delicately and precisely insert a catheter into the brain, allowing clinicians to treat stroke faster and more safely than traditional methods. This novel method will also allow clinicians to control the system remotely, extending access to specialized care. The team is currently optimizing the system and establishing regulatory requirements towards clinical validation of the technology.



Tethys

ETH | Start: 2023, Team: 10

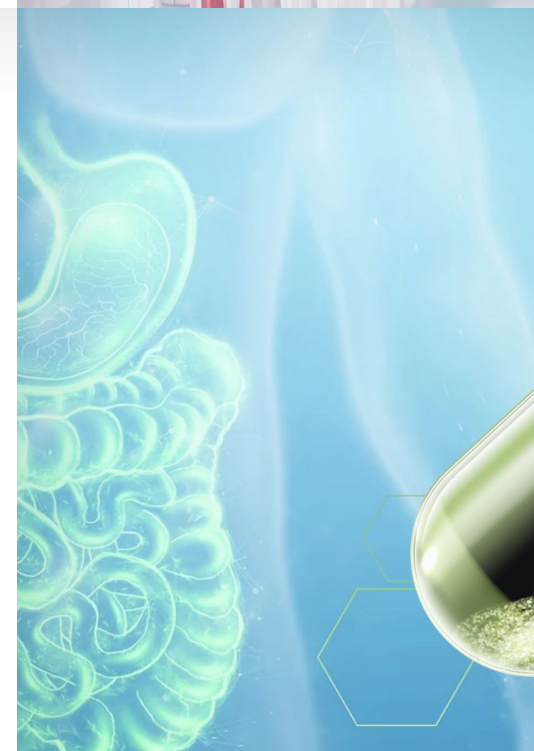
Tethys is developing and manufacturing a compact underwater drone with autonomous mapping capabilities in rough waters. The final product, together with user-friendly software for operating the robot and analyzing the collected data, will revolutionize robotic automation in the underwater industry. The team is validating the robotic system's utility in trials with early adopters and research partners to optimize usability and robustness.



Phire

Spin-off company: ATLypho AG
ETH/UZH | Start: 2021, Team: 4

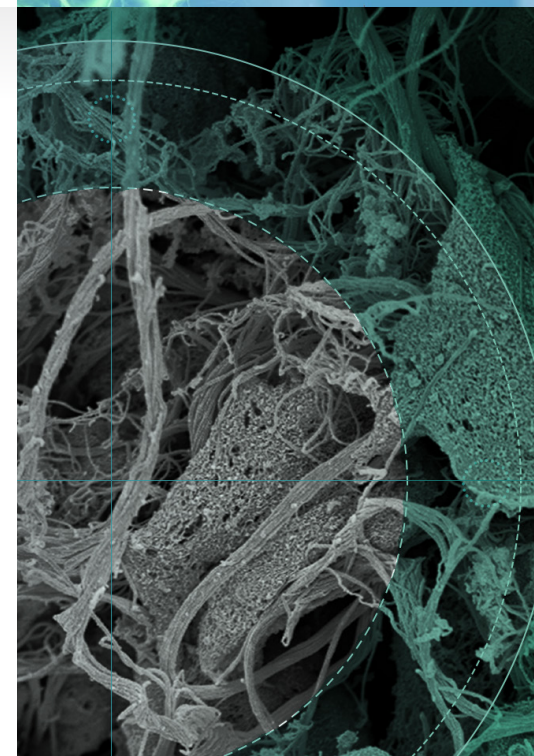
Phire is developing a novel T-cell engaging antibody to transform current hematopoietic stem cell transplantation practice into an immunologic precision-medicine approach. In life-threatening diseases such as Acute Myeloid Leukemia, Phire's antibody will allow for a more precise immunologic eradication of the existing healthy and diseased stem cells of the blood system, thereby circumventing toxic chemotherapeutic or radiation treatments prior to transplantation. The team is currently in the pre-clinical phase preparing a first-in-human clinical trial.



Recolony

Spin-off company: Recolony AG
UZH | Start: 2022, Team: 8

Recolony focuses on the development of a bacteria-based therapy for colorectal cancer consisting primarily of selected bacteria of the gut microbiota. These bacteria have an enormous influence on the immune system and enhance an immune reaction against tumors. The team is developing orally applied commensal bacteria as a monotherapy with higher safety and tolerability than the standard treatment. Recolony is currently establishing regulatory requirements towards validating the novel approach in the clinic.



Tandem

Spin-off company: Tandem Therapeutics AG
ETH | Start: 2024, Team: 2

Progressive fibrosis results in disruption of organ function which is a major cause of morbidity and mortality worldwide. By using evolutionarily optimized matrix targeting peptides, Tandem overcomes the extracellular matrix barrier to unlock the previously inaccessible multidimensional druggable space. Using a deep understanding of matrix mechanobiology and its relation to disease progression, Tandem is developing a pipeline of selectively targeted, efficacious, and safe therapies to treat progressive lung fibrosis.

Technology Platforms



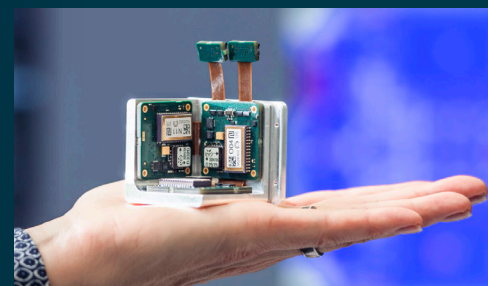
Regenerative Medicine Technologies
Certified state-of-the-art technologies platform to support Wyss Zurich projects to meet regulatory standards.

The Wyss Zurich Regenerative Medicine Technologies Platform is dedicated to manufacturing clinical-grade products that meet the required regulatory standards. The platform is a certified cleanroom facility for Good Manufacturing Practice (GMP), which comprises GMP and Good Distribution Practice (GDP) specialists, expert advisors, and GMP qualified infrastructure.

The platform provides the expertise, guidance, and infrastructure required to respond to the diverse regulatory and technical challenges of Wyss Zurich projects in the field of regenerative medicine.

Support is provided through the following departments, infrastructure, and services:

- › Manufacturing
- › Quality Management
- › Quality Control
- › Hygiene
- › Biobank
- › Good Distribution Practice
- › ISO 13485 for Medical Devices



Biomedical and Robotics Technologies
State-of-the-art technology platform to support Wyss Zurich projects in their transfer to the market.

The translation of technologies into products following the time and resource allocation is a major challenge for startups. The mission of the Robotics Technologies Platform is to support and accelerate Wyss Zurich projects in their transfer to market by providing multidisciplinary expertise and services, covering a range of core competences such as engineering, industrial design, prototyping, product development, and regulatory requirements.

Through an interdisciplinary team, state-of-the-art mechatronic prototyping facilities, and a network of external partners, the platform provides a range of services in the following topics:

- › Engineering & prototyping
- › Mechanics, electronics, embedded software engineering
- › State-of-the-art 3D Printing and laser-cutting
- › Mechatronic fabrication and testing product development
- › Development strategy and planning
- › Product design and usability
- › Manufacturing and procurement
- › Regulatory/Certification

A JOINT ACCELERATOR OF



All Wyss Zurich projects

CeNeReg*
UZH/ETH Zurich

denovoSkin*
UZH

ETIMsred*
UZH

LifeMatrix*
UZH/ETH Zurich

MUVON
UZH

Phire
UZH/ETH Zurich

Recolony
UZH

Somagenetix
UZH

Tandem
ETH Zurich

Associate projects

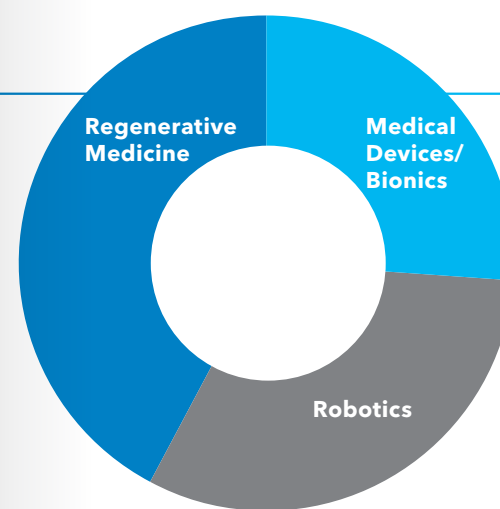
SwissProsthetics*

Rosie*

Outreach projects

mint & pepper

PATHOS*



* completed projects

hemotune*
ETH Zurich

Hylomorph*
ETH Zurich

Liver4Life
ETH Zurich/UZH

MYNERVA
ETH Zurich

Nanoflex
ETH Zurich

OxyPrem*
UZH

ANYmotion*
ETH Zurich

Sevensense*
ETH Zurich

Seervision*
ETH Zurich

Tethys
ETH Zurich

Voliro*
ETH Zurich

Wingtra*
ETH Zurich

Zurich Eye*
ETH Zurich/UZH

For more information please see our website:



Wyss Zurich
Translating
Science into Life

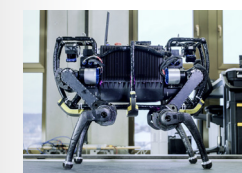
Completed projects



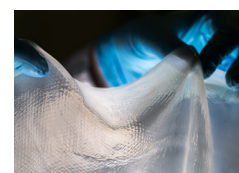
Zurich Eye
2015–2016
Team acquired by
Reality Labs/Oculus
Replicating human visual perception in robots.
Team of >120
Leverage factor 4.3



Wingtra
2016–2018
Spin-off company:
Wingtra AG
Map larger, map faster, map anywhere.
Team of >100
Leverage factor 30.1
Headquarters in Zurich, Switzerland. Additional offices in Denver, USA, and Zagreb, Croatia.



ANYmotion
2016–2019
Spin-off company:
ANYbotics AG
Autonomous robots for industrial inspection.
Team of >170
Leverage factor 46.7
Headquarters in Zurich, Switzerland.



HYLOMORPH
2015–2020
Spin-off company:
HYLOMORPH AG
An even more carefree life for people with implants.
Team of 11
Leverage factor 6.6
Headquarters in Zurich, Switzerland.



ETIMsred
2015–2021
Spin-off company:
Cellerys AG
Reinventing multiple sclerosis therapy.
Team of 14
Partnership with Novartis in 2021 for clinical development.
Headquarters in Schlieren, Switzerland.



Seervision
2018–2021
Spin-off company:
Seervision AG
Acquired by: **Q-SYS**
Camera automation software for effortless video production.
Team of 20
Leverage factor 2.7
Headquarters in Zurich, Switzerland. Additional offices in Athens, Greece. Ten partners in 18 countries.



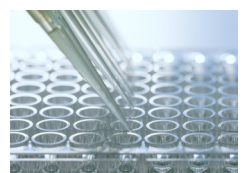
Sevensense
2018–2021
Spin-off company:
Sevensense Robotics AG
Acquired by: **ABB**
Autonomy for your robots.
Team of 36
Leverage factor 6.2
Headquarters in Zurich, Switzerland.



denovoSkin
2016–2022
Spin-off company:
CUTISS AG
Personalized, bio-engineered, dermo-epidermal skin grafts.
Team of >40
Leverage factor 8.5
Headquarters in Schlieren, Switzerland. Subsidiary office *CUTISS Innovation* in Sophia Antipolis, France.



OxyPrem
2018–2022
Spin-off company:
OxyPrem AG
Uncovering brain oxygen in high-risk patients.
Team of 13
Leverage factor 1.1
Headquarters in Zurich, Switzerland.



CeNeReg
2016–2022
Spin-off company:
NovaGo Therapeutics AG
Enhancing the regeneration of the injured central nervous system.
Team of 9
Leverage factor 4.8
Headquarters in Schlieren, Switzerland.



hemotune
2017–2022
Spin-off company:
hemotune AG
Restoring immune balance in sepsis.
Team of 22
Leverage factor 6.0
Headquarters in Schlieren, Switzerland.



Voliro
2015–2023
Spin-off company:
Voliro AG
The multi-purpose robotics flight platform redefining work at height.
Team of 32
Leverage factor 2.4
Headquarters in Zurich, Switzerland.



LifeMatrix
2015–2024
Spin-off company:
LifeMatrix Technologies AG
Tissue-engineered human matrices to repair and regenerate the heart
Team of 11
Leverage factor 1.3
Headquarters in Zurich, Switzerland.

Completed outreach and associate projects



PATHOS
2018–2022
Poetic Animatronics Through Hands-On Systems.



Rosie
2017–2019
Train a robot. Learn science.



SwissProsthetics
2017–2021
A modular system of application-specific prosthetic hands.

Outreach project



mint & pepper
Project since 2018
Empower future pioneers.

26
Projects supported

700+
Jobs created

ETH 120m+
Wyss Zurich funding bridging the "valley of death"

ETH 300m+
Additional funding raised by the projects/startups

2 exits
completed